

Cartago Table Runner

Finished runner size:

14-1/4" x 42"

Materials

1/2 yard red print fabric
 1/4 yard gold print fabric
 2/3 yard green fabric
 1-1/3 yards backing fabric
 Template plastic
 21" x 48" batting

Quantities are for 40/44"-wide, 100% cotton fabrics. Measurements include 1/4" seam allowances. Sew with right sides together unless otherwise stated.

Note: Patterns for Templates A, B and C are on pages 30.

Cut the Fabrics

From red print fabric, cut:

- 3 Template A.
- 2 Template B.
- 3—2-1/2" x 42" binding strips.

From gold print fabric, cut:

- 8 Template B reversed.

From green fabric, cut:

- 8 Template C.
 - 3—2-3/4" x 42" strips.
- From the strips, cut:
 2—2-3/4" x 37-1/2" and
 2—2-3/4" x 14-1/4" border strips.

Note: Borders are exact length needed. You may want to cut them longer to allow for differences in piecing.

From backing fabric, cut:

- 1-21" x 48" rectangle.

Table Runner Center Assembly

1. Referring to the Table Runner Center Assembly Diagram, lay out 3 red print A pieces, 2 red print B pieces, 8 gold print B reversed pieces and 8 green C pieces in diagonal rows as shown.

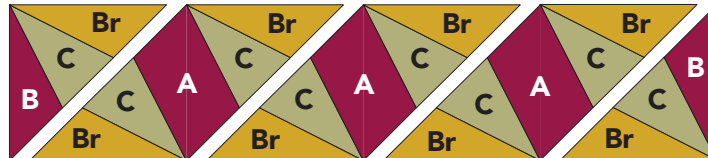
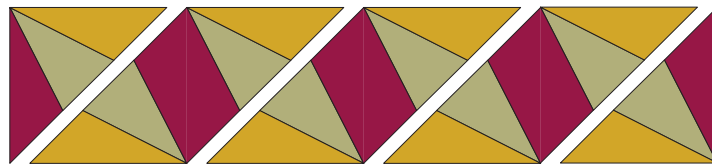
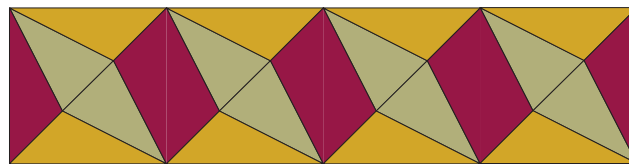


Table Runner Center Assembly Diagram

2. Sew the pieces together in diagonal rows. Press seams away from the green C pieces.



3. Join the diagonal rows to make the table runner center. Press seams in one direction.



Adding the Border

1. Referring to the Table Runner Top Assembly Diagram, sew the green 2-3/4" x 37-1/2" border strips to the long edges of the table runner center. Press seams toward border.

2. Sew the green 2-3/4" x 14-1/4" border strips to the remaining edges of the table runner center. Press seams toward border.

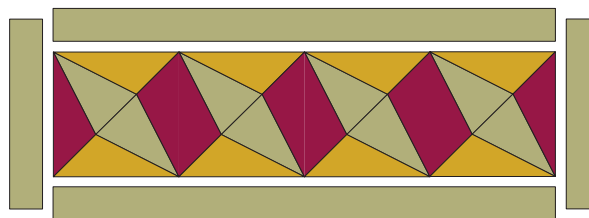


Table Runner Top Assembly Diagram

Complete the Table Runner

1. Layer table runner top, batting and backing.
2. Quilt as desired.
3. Bind with red binding strips.

Cartago Wallhanging

Finished wallhanging size:

34-1/4" x 43-1/2"

Materials

3/4 yard red fabric

1 yard blue fabric

1-1/4 yards light beige fabric

1-3/8 yards backing fabric

Template plastic

41" x 50" batting

Quantities are for 40/44"-wide, 100% cotton fabrics. Measurements include 1/4" seam allowances. Sew with right sides together unless otherwise stated.

Note: Patterns for Templates A, B and C are on pages 30.

Cut the Fabrics

From red fabric, cut:

- 9 Template A.
- 6 Template B.

From blue fabric, cut:

- 8 Template A reversed.
- 8 Template B reversed.
- 5—2-1/2" x 42" binding strips.

From light beige fabric, cut:

- 24 Template C.
 - 4—3-1/2" x 42" strips.
- From the strips, cut:
- 2—3-1/2" x 37-1/2" and
 - 2—3-1/2" x 34-1/4" border strips.

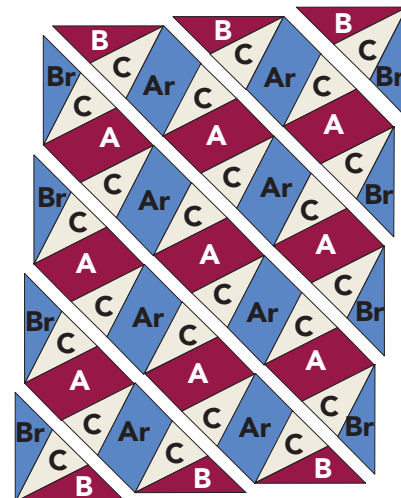
Note: Borders are exact length needed. You may want to cut them longer to allow for differences in piecing.

Wallhanging Center Assembly

1. Referring to Wallhanging Center Assembly Diagram, lay out 9 red A pieces, 6 red B pieces, 8 blue A reversed pieces, 8 blue B reversed pieces and 24 light beige C pieces in diagonal rows as shown.

2. Sew the pieces together in diagonal rows. Press seams away from the light beige C pieces.

3. Join the diagonal rows to make the wallhanging center. Press seams in one direction.

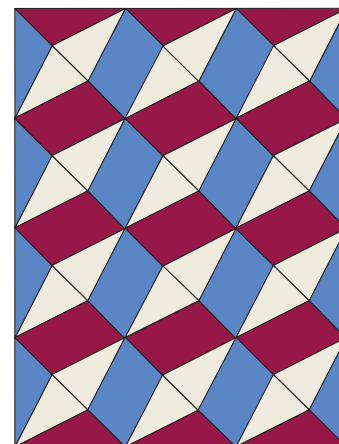


Wallhanging Center Assembly Diagram

Adding the Border

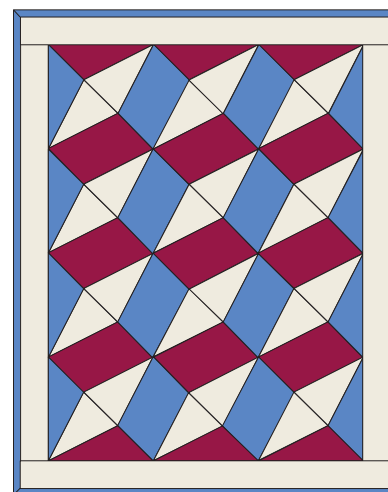
1. Referring to the Wallhanging Top Assembly Diagram, sew the light beige 3-1/2" x 37-1/2" border strips to opposite sides of the wallhanging center. Press seams toward the border.

2. Sew the light beige print 3-1/2" x 34-1/4" border strips to the remaining edges of the wallhanging center. Press seams toward the border.



Complete the Wallhanging

1. Layer wallhanging top, batting and backing.
2. Quilt as desired.
3. Bind with blue binding strips.



Wallhanging Top Assembly Diagram

Cartago Table Runner and Wallhanging Templates

Enlarge 145%

