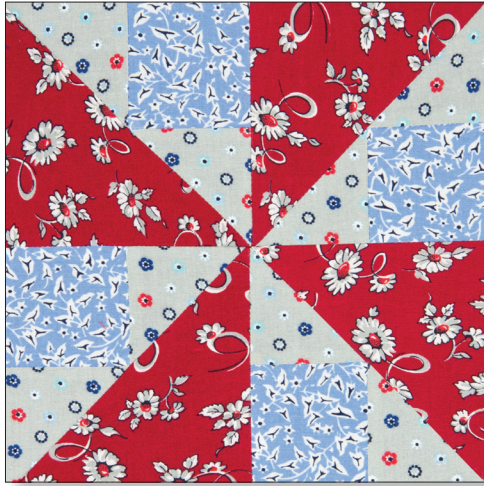
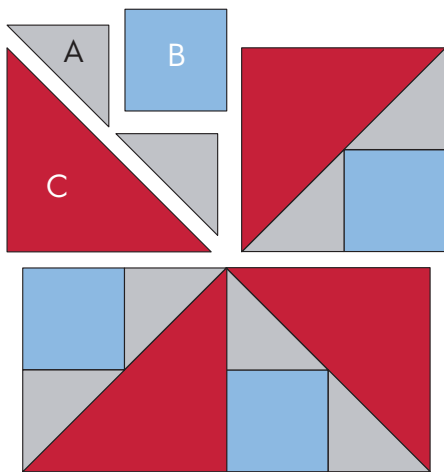


Brave World

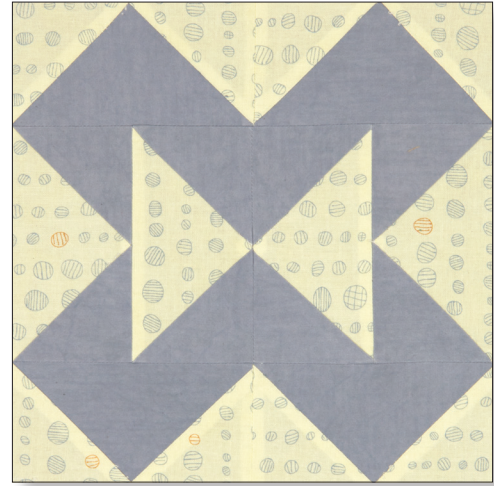


Color/Cut	Subcut	6"	9"	12"
A 4		2-7/8"	3-1/8"	3-7/8"
B 4		2"	2-3/4"	3-1/2"
C 2		3-7/8"	5-3/8"	6-7/8"



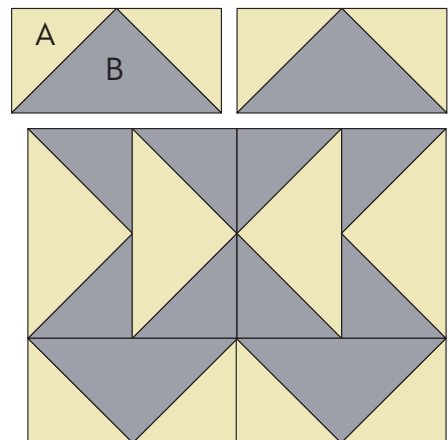
HST—pages 12-13
Adding Triangles to a Square—page 25

Brown Goose



Color/Cut	Subcut	6"	9"	12"
*A 1		4-1/4"	5-3/4"	7-1/4"
A 4		2-3/8"	3-1/8"	3-7/8"
B 1		4-1/4"	5-3/4"	7-1/4"
*B 4		2-3/8"	3-1/8"	3-7/8"

*Use the large A square and 4-B squares to make Four-at-a-Time Flying Geese, page 18.



Four-at-a-Time Flying Geese—page 18