



# Picnic Table Runner



Originally published in the book

Thimbleberries®

## Cottage Comfort

by Lynette Jensen

Photos, illustrations and text copyright © 2001 by Landauer Publishing, LLC.

Projects copyright © 2001 by Lynette Jensen

All rights reserved. No part of this pattern may be reproduced or transmitted in any form by any means, electronic or mechanical, including photocopying, recording, or by any information storage and retrieval system without permission in writing from the publisher with the exception that the publisher grants permission to enlarge template patterns for personal use only. The scanning, uploading and distribution of this pattern or any part thereof via the Internet or any other means without permission from the publisher is illegal and punishable by law. The publisher presents the information in this pattern in good faith. No warranty is given, nor are results guaranteed. This pattern is for personal use only, and is only for use by the original purchaser. Finished products made from this pattern may not be re-sold.

## Fabrics & Supplies

Finished Size: 22 x 50-inches

Yardage is based on 42-inch wide fabric

3/8 yard GOLD PRINT for stars and blocks

1/3 yard BLUE GRID for blocks

1/3 yard RED PRINT for blocks

1/8 yard BEIGE PRINT for blocks

3/4 yard BLUE PRINT for lattice and border

1/2 yard RED PRINT for binding

1-1/2 yards BACKING FABRIC

QUILT BATTING, at least 26 x 54-inches

## Picnic Table Runner

Blocks Make 3 blocks

### Cutting

From GOLD PRINT:

- Cut 1, 4-1/2 x 42-inch strip. From this strip cut: 3, 4-1/2-inch squares
- Cut 3, 2-1/2 x 42-inch strips. From these strips cut: 36, 2-1/2-inch squares

From BLUE GRID:

- Cut 1, 2-1/2 x 42-inch strip. From this strip cut: 12, 2-1/2-inch squares
- Cut 2, 2-1/2 x 42-inch strips. From these strips cut: 12, 2-1/2 x 4-1/2-inch rectangles

From RED PRINT:

- Cut 3, 2-1/2 x 42-inch strips

From BEIGE PRINT:

- Cut 2, 1-1/2 x 42-inch strips

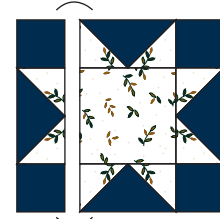
### Piecing

Step 1 Position a 2-1/2-inch Gold square on the corner of a 2-1/2 x 4-1/2-inch Blue Grid rectangle. Draw a diagonal line on the Gold square, and stitch on the line. Trim the seam allowance to 1/4-inch, and press. Repeat this process at the opposite corner of the Blue Grid rectangle.



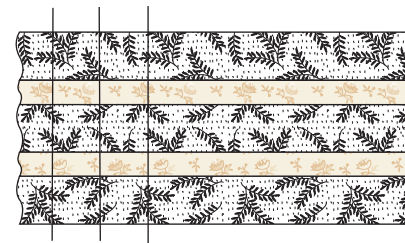
Make 12 star points

Step 2 Sew Step 1 star point units to the top and bottom of a 4-1/2-inch Gold square. Press the seam allowances toward the Gold square. Sew 2-1/2-inch Blue Grid squares to the ends of the remaining star point units. Press the seam allowances toward the Blue Grid squares. Sew the units to the sides of the star unit, and press.



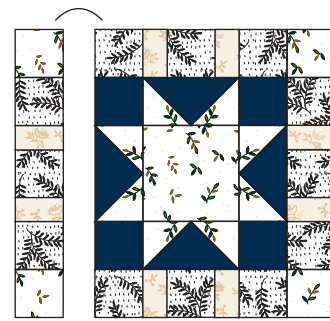
Make 3

Step 3 Aligning long edges, sew together the 2-1/2 x 42-inch Red strips and 1-1/2 x 42-inch Beige strips. Press the seam allowances toward the Red strips. Cut the strip set into segments.



Crosscut 12,  
2-1/2-inch wide segments

Step 4 Sew Step 3 units to the top and bottom of the star units, and press. Add 2-1/2-inch Gold squares to the ends of the remaining Step 3 units, and press. Sew the units to the sides of the star units to complete each star block, and press.



Make 3

## Quilt Center and Border

Note: The yardage given allows for the border strips to be cut on the crosswise grain. Diagonally piece the strips as needed, referring to page 136 for Diagonal Piecing Instructions.

### Cutting

From BLUE PRINT:

- Cut 4, 5-1/2 x 42-inch border strips
- Cut 1, 2-1/2 x 42-inch strip. From this strip cut:  
2, 2-1/2 x 12-1/2-inch lattice strips

### Assembly

Step 1 Sew together the 3 pieced blocks and the 2-1/2 x 12-1/2-inch Blue lattice strips, and press.

Step 2 To attach the 5-1/2-inch wide Blue Print border strips.

## Putting It All Together

Trim the backing fabric and batting so they are 4-inches larger than the runner top.

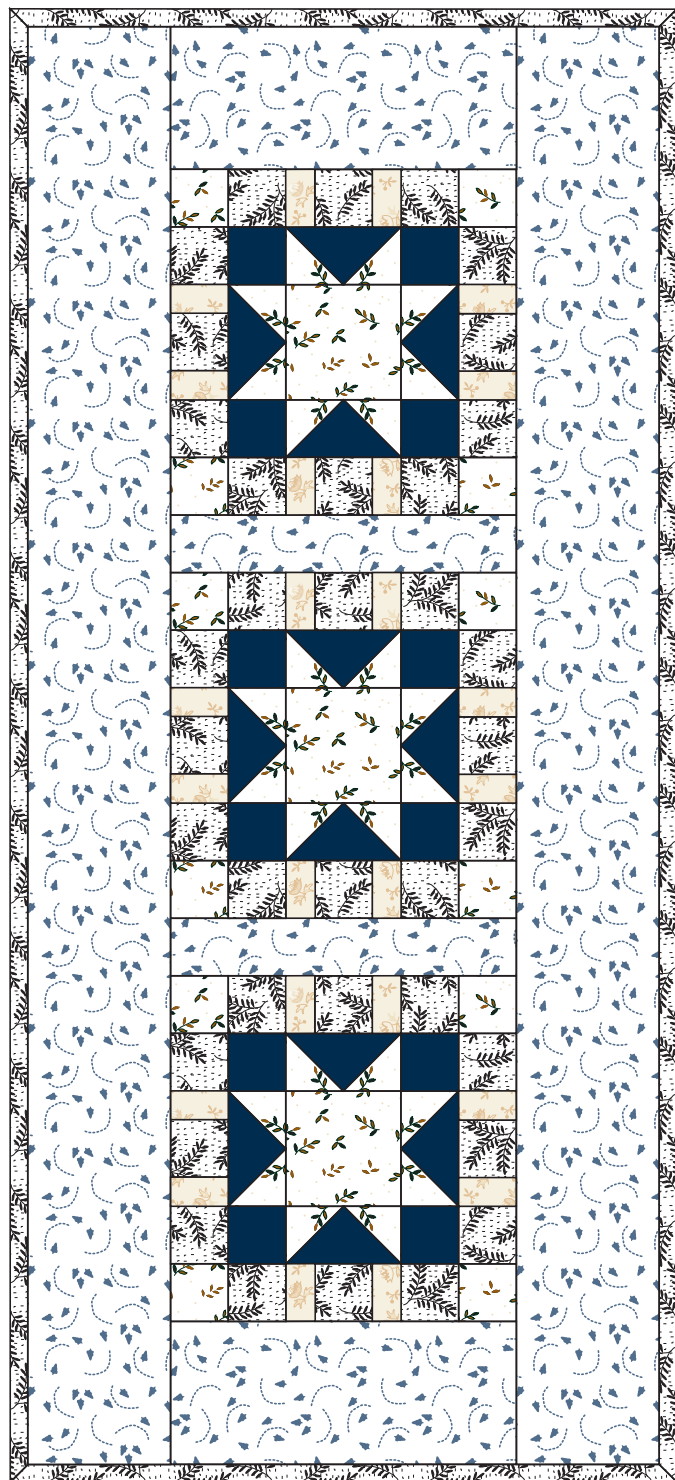
## Binding

### Cutting

From RED PRINT:

- Cut 4, 2-3/4 x 42-inch strips

Sew the binding to the quilt using a 3/8-inch seam allowance. This measurement will produce a 1/2-inch wide finished double binding.



Picnic Table Runner

